

PORTABLE OUTLET

Model # PO160UPSv2

Uninterruptible Power Supply & CPAP Battery

INCLUDES:

- ① Rechargeable Lithium-ion 159W Battery
- ② 110V Charging Cord
- ③ Travel Bag



Owner's Manual

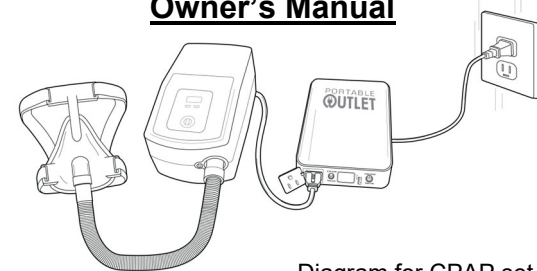


Diagram for CPAP set-up at home.
Also works as a stand-alone battery.

Portable Outlet a product of CPAP Life, LLC
1595 Peachtree Pkwy, #204-135, Cumming, GA 30041
Instructional videos at www.po160ups.com

470-297-5778
www.PortableOutlet.com

General Description

Thank you for purchasing the Portable Outlet, Uninterruptible Power Supply and CPAP Battery. Enjoy the peace of mind of knowing that if your home suffers a power outage, your CPAP therapy will continue to operate without interruption. It also works as a stand-alone battery to use while travelling or during power outages and emergencies.

Operating Temperature

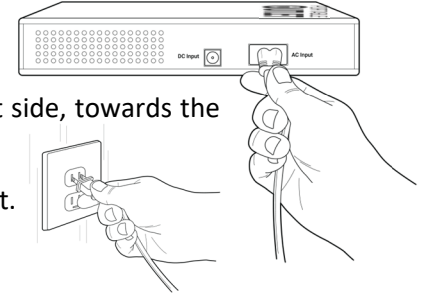
The operating temperature of a Lithium-Ion battery is 105-120 degrees. While charging or using as an Uninterruptible Power Supply, the bottom of the battery will feel hot to the touch.

WARNINGS

- Keep away from children. Do not let children play with or operate.
- Do not place objects in the AC Outlet. Only plug compatible, 110V cords into the AC Outlet (no bare electrical cords or wires).
- Do not simultaneously charge via the AC Input and DC Input (Solar).
- Not intended for bulky electronics that draw substantial power. (No appliances, coffee makers, microwave ovens, power tools, etc.) **Attempts to power devices >100W will overload and may damage the battery.**
- Operate and charge between 40°F and 105°F.
- Keep away from liquids, flammable/explosive materials and fire.
- Do not expose to water or use in rain, snow or misty weather.
- Do not attempt to disassemble or open the product.
- Only charge the battery with the power cord included.
- Do not use battery on thick carpet. It may block the ventilation holes.
- Do not place battery on it's side, as it will block the ventilation holes.

Charging the Battery

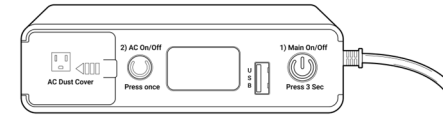
Plug the charging cord into the AC Input port.



The AC Input is located on the right side, towards the back end of the battery.

Plug the other end into a wall socket.

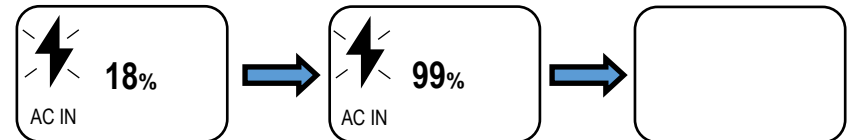
Left to Right: AC Dust Cover, AC On/Off Button, Display Screen, USB Port and Main On/Off Button.



The battery should fully charge in approximately 5 hours.

Depleted batteries may take 5 minutes for the display to appear.

While the battery is charging, a flashing ⚡ symbol and the words "AC IN" will appear on the display. The battery life percentage will increase during this time. When the battery is fully charged, the display no longer flashes or shows the battery life percentage.



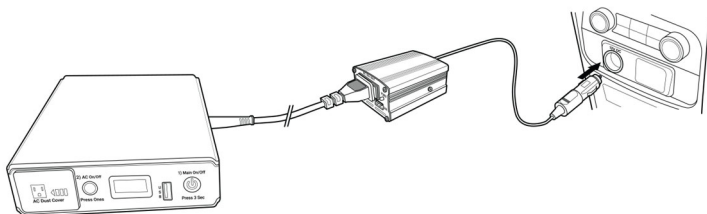
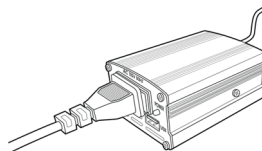
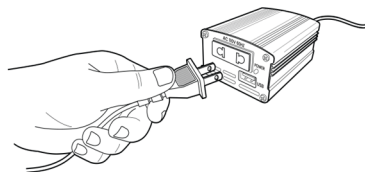
The display will stay blank until the Main On/Off button is pressed.

Using the Car Charger (sold separately)

Plug the charging cord into the front of the DC2AC Car Charger.

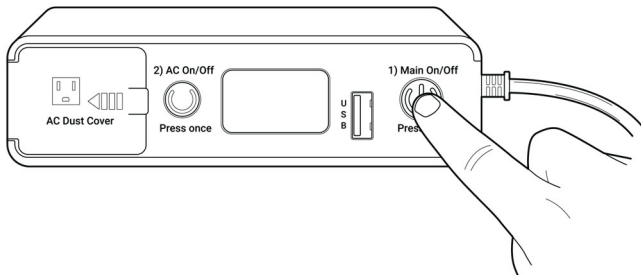
The car charger (110V inverter) plugs into the vehicle's 12V input/lighter adapter.

It typically takes 5 to 6 hours to recharge the battery. You should use the car charger while the vehicle's engine is running or turn the engine on every 30 minutes.



Turn ON the Battery

Press the Main On/Off button for 3 seconds to turn the battery ON.



4

Once the Main On/Off button is pressed for 3 seconds and released, the screen will display these icons:

50%
 AC IN AC OFF

USB ON
 = Charging
50% = Battery life (Example shown at 50%)

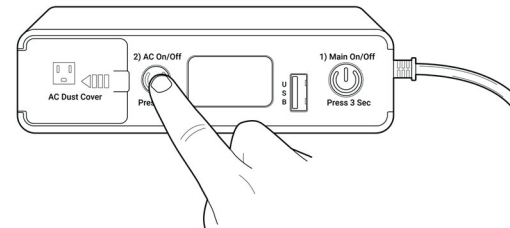
USB ON = USB has power
AC IN = AC Charging Cord is powering the battery
AC OFF = AC Outlet (that can power a CPAP) is OFF

Battery life increases when the battery is plugged into a power source. In time, the battery life indicator can display up to 100%.

Turn ON the AC Outlet

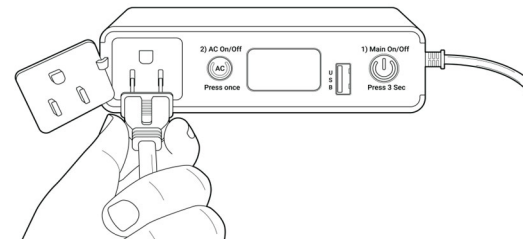
Press the AC On/Off button to activate the AC Outlet.

Your device will NOT receive power unless you press this button.



Plug your device into the AC Outlet

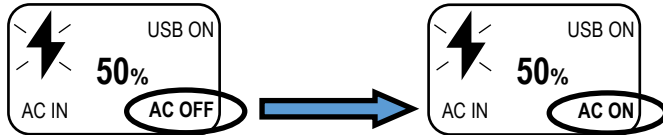
Open the Dust Cover and plug your device into the AC Outlet.



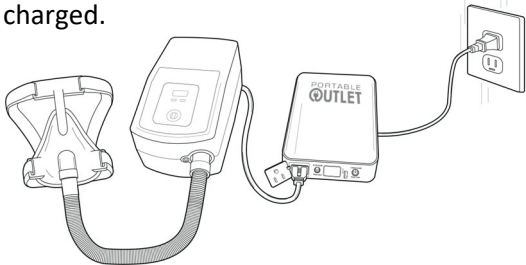
5

The AC On/Off Button

When you press the **AC On/Off** button, the display will change from “**AC OFF**” to “**AC ON**”.



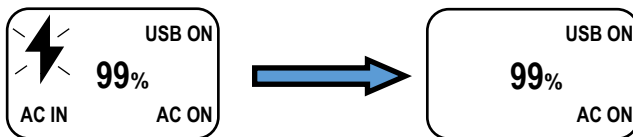
When using as an Uninterruptible Power Supply (UPS), set-up your CPAP or BiPAP device as shown below. While receiving therapy, the battery stays charged.



During a Power Outage

In the event of a power outage, the Portable Outlet instantly switches to the battery mode. You should not have any interruption to your CPAP or BiPAP therapy (until the battery is depleted).

The display will change when there is a power outage:

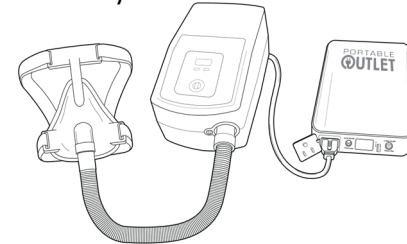


During a power outage, if the USB is not in use, the display may change from “**USB ON**” to “**USB OFF**”. To activate the USB, simply switch off the **Main On/Off** button, and turn the system on again.

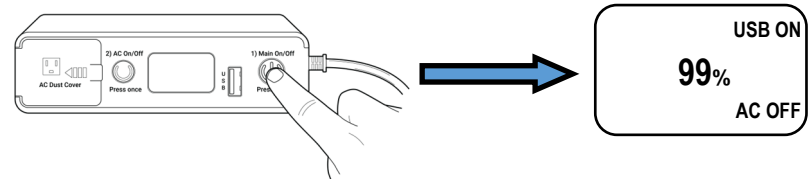
Using as a Stand-Alone Battery

Follow these instructions when using the Portable Outlet as a stand-alone battery (when travelling or during emergencies).

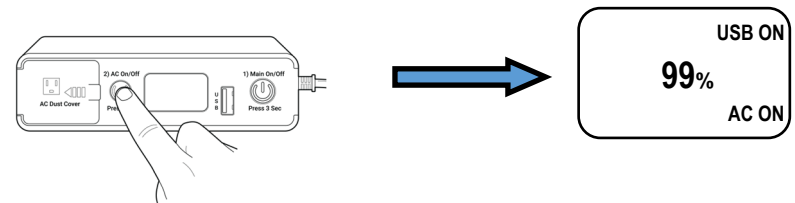
1) Charge your battery. Then plug your CPAP into the AC Outlet on the front of the battery.



2) Press the **Main On/Off** button for 3 seconds to turn on the display. The display will look like this:



3) Press the **AC On/Off** button to turn on the AC Outlet. The display changes from “**AC OFF**” to “**AC ON**”.



To maximize battery life, when possible, turn off your Heated Tube, Heated Humidifier and make sure you are not having mask leaks. Visit www.PortableOutlet.com/maxlife to learn more.

CHARGING QUESTIONS

Problem	Possible Solutions
How can I tell if the battery is charging?	When the charging cord is plugged in, the display will show a flashing ⚡ symbol and the words “ AC IN ”. The battery life percentage is also displayed.
It is plugged in and does not appear to be charging.	<ol style="list-style-type: none"> 1) Confirm the power cord is all the way in the right side of the battery. 2) Confirm the outlet you’re using to charge the battery has power. Try another wall outlet. 3) Depleted batteries may take 5 minutes for the display to activate. 4) Unplug the power cord from the battery, rotate cord end 180° and plug back in battery. 5) The battery may be fully charged. Turn the battery on to see the battery life percentage.
My battery charges slowly	The initial charge may take up to 6 hours. It typically takes 5 hours to recharge.
My battery won’t reach 100%	Discharge the battery by removing the power cord from the wall outlet and run battery down to 10-20%. Then recharge the battery to 100%.

BATTERY USE QUESTIONS

I do not get power from the battery.	First be sure it is turned ON by pressing the Main On/Off button for 3 seconds, then the AC On/Off button. The display must read “ AC ON ”.
I pressed the Main On/Off button for 3 seconds but nothing happened.	<ol style="list-style-type: none"> 1) The battery is depleted. Charge the battery 2) It had a power surge, or overloaded. Unplug all cords. Wait 5 minutes. Plug cord into battery and wall outlet to reset it.
The display was on, but turned off when I plugged a device in the battery outlet.	It overloaded. Unplug all cords. Wait 5 minutes. Plug the power cord in battery, then in wall outlet to reset it. NOTE: Overloads happen when the device you’re powering has an output >100W.

BATTERY USE QUESTIONS (continued)

Problem	Possible Solutions
My CPAP only ran a few hours while using the battery.	When possible, follow these guidelines: <ol style="list-style-type: none"> 1) Turn OFF the Heated Tube when applicable. 2) Turn OFF or remove the Heated Humidifier. 3) CPAPs increase pressure to compensate for leaks. Replace your mask or try a Full Face Mask. Leaks may occur with Nasal Masks. Visit www.PortableOutlet.com/maxlife to learn more.
While camping the battery quickly died.	The outside temperature may be too cold. Lithium-ion cells drain rapidly below 40°F and above 105°F.
After an outage, it reads “ AC ON ”, but also “ USB OFF ”.	If the USB is not in use during an outage, it may soon display “ USB OFF ”. To resolve, press Main On/Off to turn OFF the battery, then turn it ON again.
The battery is hot while plugged in as an Uninterruptible Power Supply.	The operating temperature of a Lithium-Ion battery is 105-120 degrees. The bottom of the battery will feel hot. This is normal. If possible, stand the battery on its end (where the serial number is located). This will help dissipate heat through the side vent holes.

BATTERY FAILURE

Battery flashes 00%	The battery may be defective. Contact for possible warranty replacement.
After all attempts, it will not charge	The battery may be defective. Contact for possible warranty replacement.
It will not power anything	The battery may be defective. Contact for possible warranty replacement.
Any battery noises (buzzing or clicking)	The battery may be defective. Contact for possible warranty replacement.

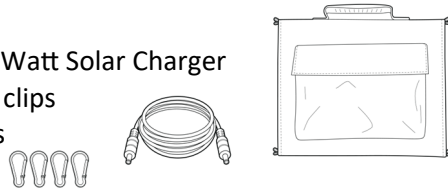
Contact 470-297-5778 for technical support

Using the Solar Panel Charger (sold separately)

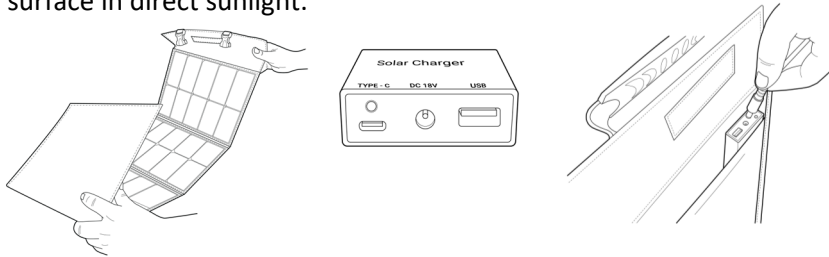
This compact and highly portable solar charging system is a great way to recharge the Portable Outlet 160UPS batteries with sunlight.

The system includes:

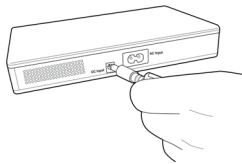
- Foldable, 4 panel, 18 Volt, 60 Watt Solar Charger
- 4 carabiner, aluminum D-ring clips
- USB-A and USB-C power ports
- 6 foot charging cable



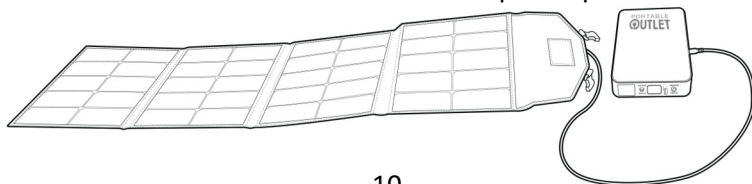
On sunny, dry days, simply unfold the Solar Panel, place it on a flat surface in direct sunlight.



Then plug one end of the cord into the connection box in the pouch and the other end into the DC Input port of your Portable Outlet battery.



You can recharge the Portable Outlet and simultaneously charge small electronics with the USB-A and USB-C power ports.



Limited Warranty

- Please read the “Troubleshooting” section on pages 8 and 9 or visit www.po160ups.com and refer to the “Operating the PO160UPS” video BEFORE making a warranty claim.
- There is a 1 Year Limited Exchange Warranty on the battery beginning from the date of purchase. Proof of purchase is required which must include: your name, date of purchase and serial number of the battery in question. Warranty covers defects in the product due to faults in material or workmanship.
- The warranty will become VOID if repairs are attempted, or if the battery is opened.
- The warranty does not cover damage due to normal wear and tear and/or from improper use.
- Warranty or replacement is at the discretion of CPAP Life, LLC.

For more information visit www.portableoutlet.com/warranty.

Environmental Notice

This product contains a rechargeable lithium-ion battery. Please follow local regulations regarding battery disposals in your area.

Specifications - Model # PO160UPSv2

Battery Capacity:	159 Wh/14.4Ah
AC Input:	110V/60Hz
DC Input:	12-19V, 2-3.2A
AC Output:	110V/60Hz
USB DC Output:	5V, 3.0A
Rated/Peak Power Output:	100W/145W
Battery Recharging Time:	Approx. 5 Hours
Weight:	2lbs, 14ozs.
Dimensions:	5-3/8" x 9" x 1.5"